



# Fibre Optic Splice Closure



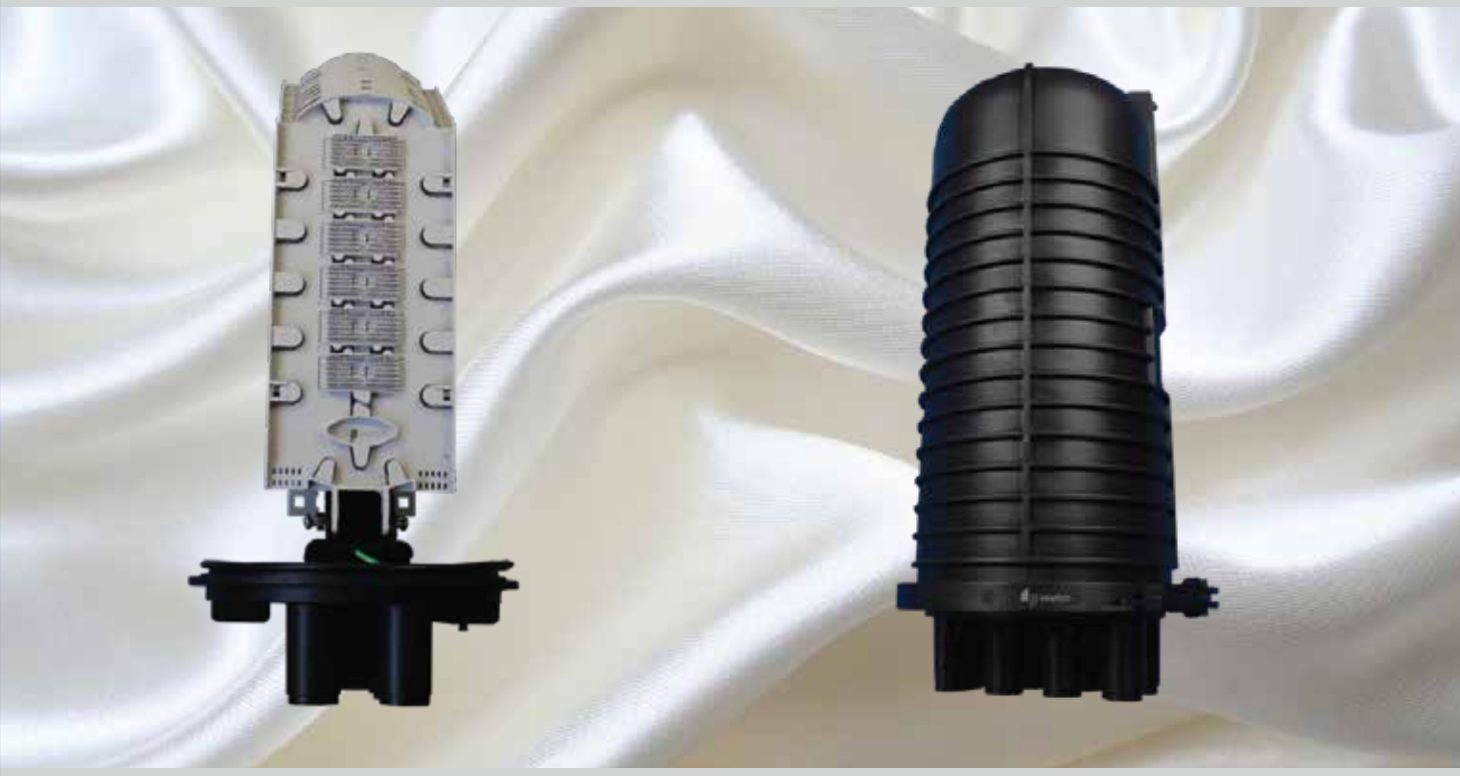
# DATA SHEET

☎ +44 20 8895 6455  
✉ [info@webbinfra.com](mailto:info@webbinfra.com)  
🌐 [www.webbinfra.com](http://www.webbinfra.com)

## Fibre Optic Splice Closure C.05.JC-D.222.M2

Joint closures are a range of products primarily used for joining cables. Joints in cables are a practical reality with the increase in distances that data needs to be transmitted. The primary function of a fiber optic joint closure is to protect the fiber joints from any physical damage.

Webb joint closures are made of high corrosion resistant polycarbonate material with heavy duty IP 68 delivering synthetic gaskets for total ingress protection. Our production treatments make our units UV resistant and waterproof. Every cable entry has high quality cable sealing plugs to maintain IP 68 ratings.



### Applications

- Underground
- Aerial
- Vault
- Wall mounting
- Pole mounting

*\*Specifications are subject to change without notice based on technical recommendations and related product enhancements*

## Features

- Recyclable and suitable for re-entry
- Can be utilized for notched, closed & rigid sheath platforms
- Inclusive of sheath conservation and central strength member fasten feature
- Corrugated closure and light-weight plastic delivers robustness and resistance to chemical and UV degradation
- Requires only base level usage of tools during installation & re-entry
- Inclusive of the entire range of hardware & flash test option is available for closures
- Protection category: IP68
- RoHS compliance

## Specifications

Part number	Splice tray	Spliced fibre-storage capacity	Size(mm)	Cable ports	Max. diameter of cable(mm)
C.05.JC-D.222.M2	Tray 222 capacity : 72 splices	864F(single fusion, standard fiber)	566mm x 285mm	1 oval port + 6 round ports	1 oval port for 1 cablewith max 22 or 9mm.6 round ports, each port for 1 cable with max 9/6/8mmith max 30 mm

*\*Specifications are subject to change without notice based on technical recommendations and related product enhancements*



Drop cable sealing

## Mechanical Sealing Kits For Oval Port



- Oval port closing kits BC6-001-M2-22mm
- Up to 2 cables
- Maximum diameter of cables  $\varnothing$  22 mm

- Oval port closing kits BC6-001-M2-9mm
- Up to 2 cables
- Maximum diameter of cables  $\varnothing$  9 mm

*\*Specifications are subject to change without notice based on technical recommendations and related product enhancements*

## Drop Cable Sealing Kits For Round Port



- Round port closing kit BC6-002-M4-9mm
- Round port  $\varnothing$  30 mm
- Up to 4 drop cables
- Maximum diameter of cables  $\varnothing$  9 mm



- Round port closing kit BC6-002-M8-6mm
- Round port  $\varnothing$  30 mm
- Up to 8 drop cables
- Maximum diameter of cables  $\varnothing$  6 mm



- Round port closing kit BC6-002-M6-8mm
- Round port  $\varnothing$  34 mm(new base of BC6)
- Up to 6 drop cables
- Maximum diameter of cables  $\varnothing$  8 mm

*\*Specifications are subject to change without notice based on technical recommendations and related product enhancements*

## Optional Accessories

Type	Code
Earthing wire	C.05.OA.JC-EW
Hoop for pole mount	C.05.OA.JC-H
Transom for pole mount	C.05.OA.JC-T
Bracket option for wall mount	C.05.OA.JC-B
Sand paper	C.05.OA.JC-SP
Anchor bolts	C.05.OA.JC-AB

*\*Specifications are subject to change without notice based on technical recommendations and related product enhancements*